

# MONTHLY MEMBERSHIP PROGRESS REPORT

LOCATION INDIA

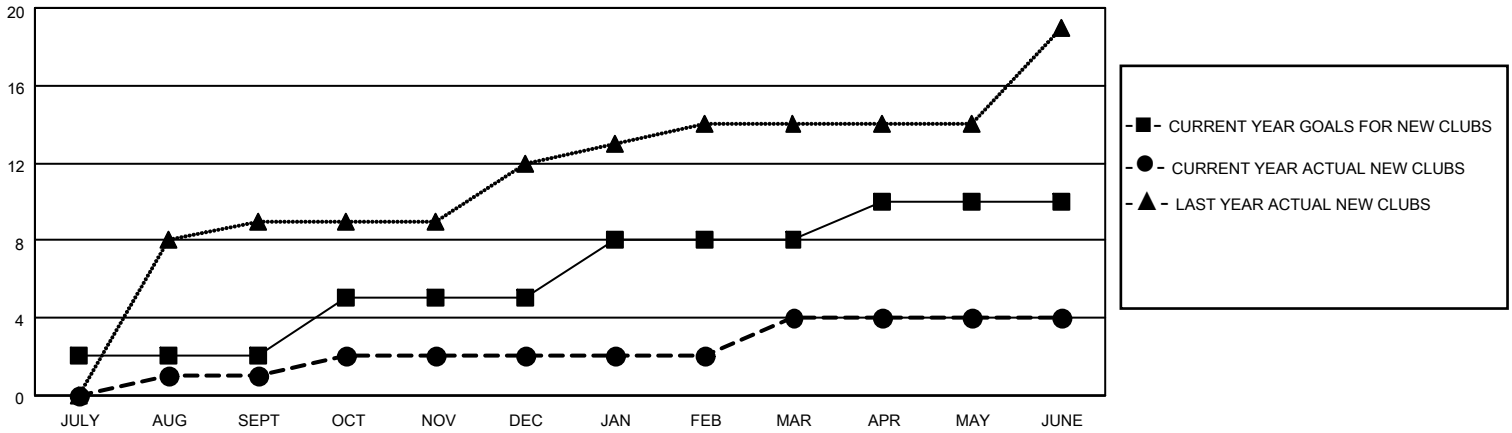
District 324 I

Results as of: 6/30/2023

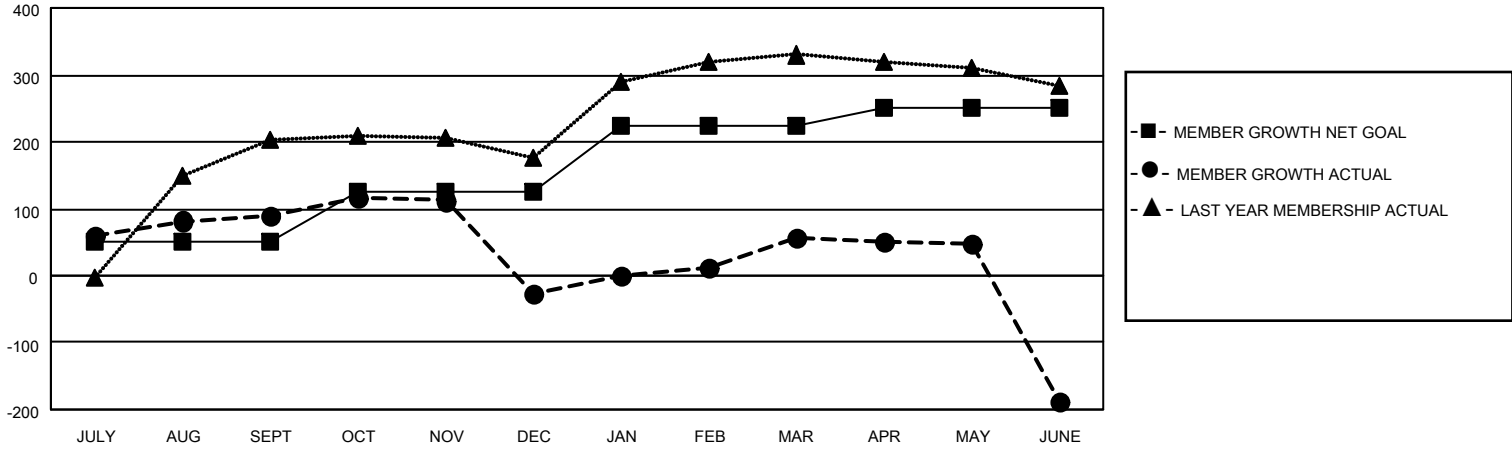
Clubs			
RESULTS FOR 2022-2023			
QUARTER	NEW CLUB GOAL	NEW CLUBS	DROPPED CLUBS
JULY/AUG/SEPT	2	1	0
OCT/NOV/DEC	3	1	6
JAN/FEB/MAR	3	2	0
APR/MAY/JUNE	2	0	7

Members			
RESULTS FOR 2022-2023			
QUARTER	MEMBER GROWTH NET GOAL	MEMBER GROWTH ACTUAL	DROPPED MEMBERS ACTUAL (including transfers)
JULY/AUG/SEPT	50	137	45
OCT/NOV/DEC	75	44	160
JAN/FEB/MAR	100	135	30
APR/MAY/JUNE	25	56	288

**GOALS AND ACTUAL NEW CLUBS CUMULATIVE**



**GOALS AND ACTUAL MEMBERS CUMULATIVE**



DROPPED CLUBS: 13	
<b>DROPPED MEMBERS</b>	
DECEASED	12
CLUB CANCELLED	228
OTHER	283
<b>TOTAL</b>	<b>523</b>

60 CLUBS OF 86 ADDED 1 OR MORE NEW MEMBERS

[CLICK HERE FOR CUMULATIVE MEMBERSHIP DATA](#)

<u>GENDER DISTRIBUTION</u>	
MALE	2,076 (91.25%)
FEMALE	199 (8.75%)
NON BINARY	0 (0.00%)
PREFER NOT TO ANSWER	0 (0.00%)
<b>TOTAL FAMILY UNIT MEMBERS</b>	<b>263</b>
<b>FAMILY MEMBERS PAYING HALF DUES</b>	<b>144</b>